



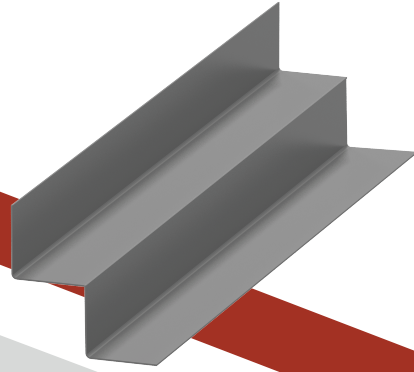
ISO 9001:2015
No.: 92200062



ISO 14001:2015
No.: 142200063



ISO 45001:2018
No.: 452200064



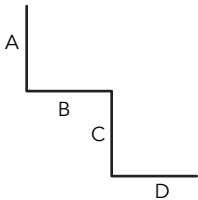
DESCRIPTION

Gframe™ W-angle is manufactured and roll formed in 3 m strips and used in suspended ceiling applications.

AVAILABLE THICKNESSES

0.45mm | 0.55mm | 0.6mm | 0.7mm
0.8mm | 0.9mm | 1.00mm

TECHNICAL SPECIFICATIONS



SIZE	DIMENSIONS (mm)				MATERIAL THICKNESS (mm)	LENGTH (mm)	ZINC COATING
	A	B	C	D			
20x20	20	20	20	20	0.45 – 1.00	3000	60 - 90
24x24	24	24	24	24			

MATERIAL PROPERTIES

Yield Strength (Fy): 33 KSI
Zinc Coating: G60 – 90

STANDARD

Gframe™ profiles are manufactured in accordance with ASTM C645 and A653/A653M-20. Installation and storage are in accordance to ASTM C1007 and C 754.

The information herein and recommendations set forth are presented in good faith and believed to be correct as of the date hereof, ASK Gypsum Factory Ltd., and its affiliated, and sister companies do not make representations or warranties as to the completeness or accuracy thereof. Information is supplied upon the condition that the persons receiving the same will make their own determination as to its suitability for their purpose prior to use. In no event will ASK Gypsum Factory Ltd. and its affiliated and sister companies be responsible for indirect, consequential, or incidental damages arising out of the use of, or inability to use this product. Our liability, if any, shall be capped to the price of the product purchased.

All specifications reflect averages derived from product sample testing and are provided as guidance only. They are subject to inherent variances and may be changed without notice to improve reliability, function, or design or otherwise.

Manufactured according to ASTM & EN standards by ASK Gypsum Factory Ltd.