

BEAM CONSOLIDATED Gaccessories™

Drop in Anchor



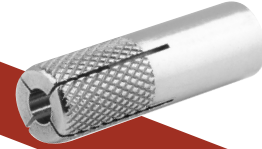
ISO 9001:2015
No.: 92200062



ISO 14001:2015
No.: 142200063



ISO 45001:2018
No.: 452200064



DESCRIPTION

The drop-in anchor is characterized by its ease of installation, anti-rust, and high pullout strength. It is used in suspended ceiling applications.

STANDARD

Gaccessories™ are manufactured in accordance with ASTM C645 and ASTM A653.

METHOD OF USE

- Make a hole in the soffit structure using a drill.
- Place the corresponding drop-in anchor in its place.
- Fix the appropriate threaded rod to the drop-in anchor that will expand to strongly fix the rod.

TECHNICAL SPECIFICATIONS

Material	Steel
Coating	Zinc Plated
Color	Silver
Diameter	6- 16 mm

DIMENSIONS

SIZE	LENGTH (mm)
M6	25
M8	30
M10	40
M12	50
M16	65