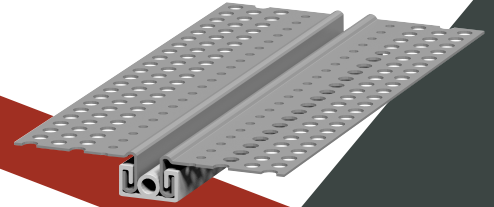


BEAM CONSOLIDATED G accessories™

Control joint



DESCRIPTION

The control joint is a combination of two perforated beads that interlock with a PVC rubber joint. It may be used as a control joint in suspended ceilings, drywall, and lining based on project requirements. The control joint is designed to allow up to 4 mm movement in each direction.

STANDARD

G accessories™ are manufactured in accordance with ASTM C645 and ASTM A653.

TECHNICAL DATA

SPECIFICATIONS	UNIT	VALUE
Material	-	Steel
Steel grade	-	G60- 90
Coating	-	Zinc Plated
Thickness	mm	0.4
Length	mm	3000
Weight	kg	0.345
Yield Strength	Mpa	20
Tensile Strength	Mpa	330